

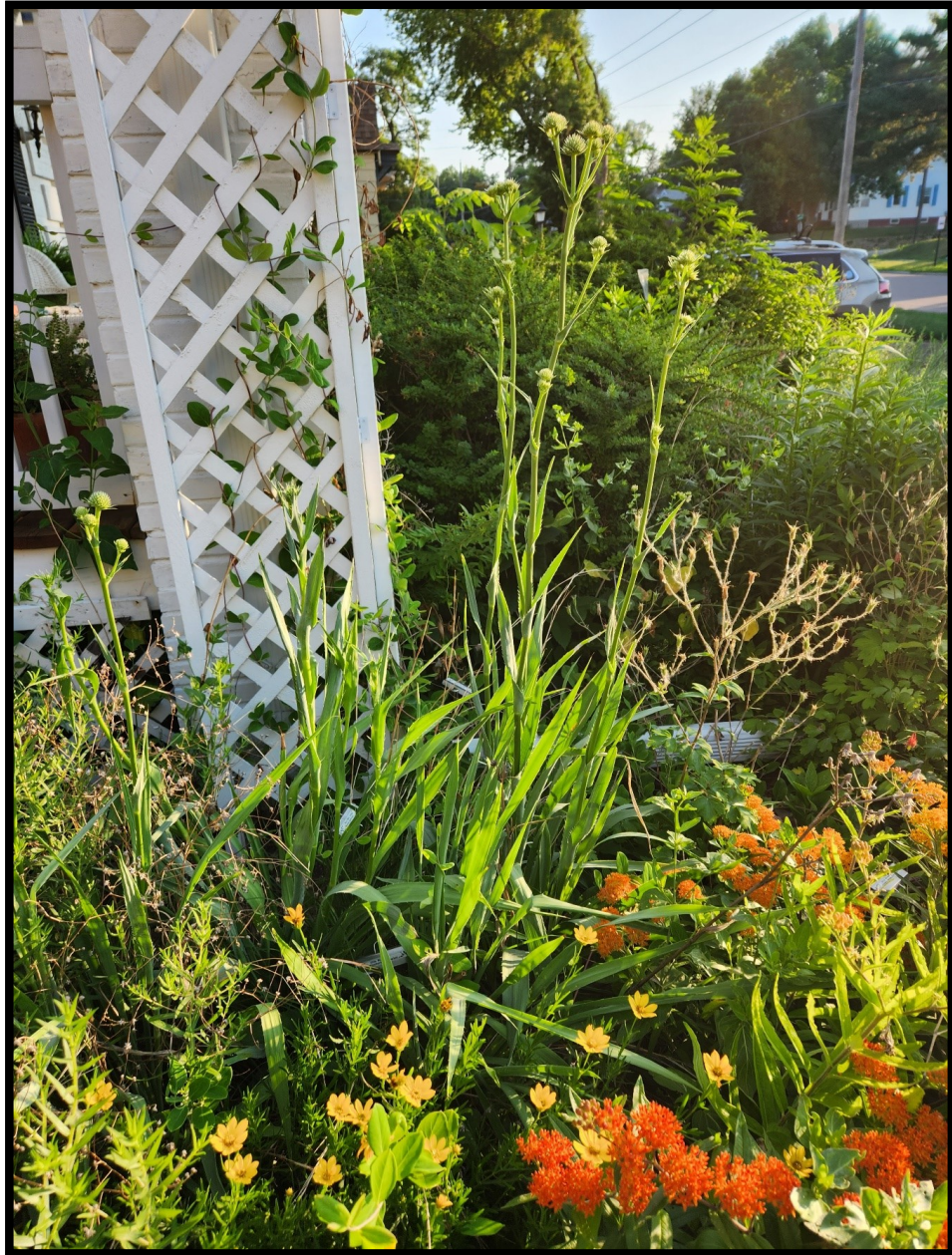
Weekly Wild Wednesday

June 28th, 2023

What a Week of "Gaining Ground!"



It feels good to look back and see our progress! Phase 4 of The Flower House is just starting with the No Dig Method!



We can hardly wait to plant those areas!

Wooooow on Phase 1 above!

In that 9x9 area three years later we have Coral Honeysuckle creeping up the installed trellis, drying Columbine seeds (on purpose), Rattlesnake Master, Little Blue Stem, a water feature created by a Garden Artisan, Lance Leaf Coreopsis, and the leaves of Dotted Blazing Star, Aromatic Aster, and Showy Goldenrod yet to bloom this Fall!

Since year 1, we have mulched **ONLY** the visible edge to show 'Cues of Care', and have only had to pull the occasional weed.

The plants have thickened to the point that very few weeds *could* grow, and they have created their very own layers and ground cover!

We love this 'get started' method!

← Thanks, Dawn, we are convinced that this really works!



Using cardboard vs not.
I should have taken the time for cardboard!!!



Speaking of seeds, the Plains Oval Sedge was just starting to drop a few of its seeds on the neighbors' driveway, so we gave it a fairly severe haircut and brought those home to dry for all of us! Let us know if you want some seed or come to the Fall Seed Share-- Date TBD!

Buddy was supervising their safe travels to their new home.



Later, On a [Sioux City Garden Club](#) field trip to Lincoln Nebraska, we were so pleased to see so many Native plants amongst all the gardens!

One really caught our eye.

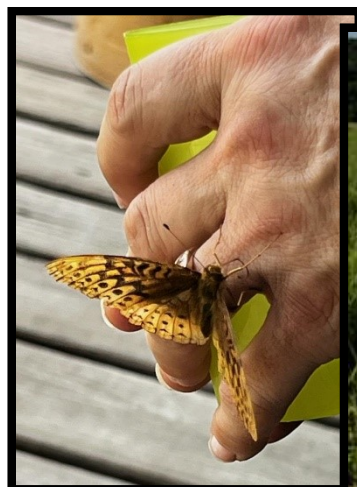


It was a Button Bush like the ones we grew from seed--and are now about a foot high—at 'The Flower House'!

We can hardly wait until ours gets these gorgeous Dr. Seuss blooms!

[Click photo →](#)

And this Lead Plant Dawn is near was HUGE! And covered with Native and non-native pollinators!
[← Click for more info!](#)



Cup Plant →



Relaxing after our hosted AND GUIDED hike at Bill and Dotty's we had a visitor sampling the salt on my hand!

Does anyone know the ID of our cute and entertaining guest far left?

There were SO many gorgeous flowers on the hike at Prairie Hills!

Dawn shared photos of & Purple Prairie Clover! [Click photos for more info!](#)

EVENTS

Garden Walk in Morningside

📅 Saturday, July 15th, 2023

🕒 9:00 am to 12:00 pm (Central Time)

📍 Morningside Area Garden Walks at Jenny's, Marcie's and Tom and Cheri's, Sioux City, IA [Map](#)

Public Welcome Family Friendly Free Event

Chapter Social Home Garden Tour Public Restroom

Free Public Parking Lots of Physical Activity

These three private gardens will be open for a walk and a chat!

Garden Artisan items will be available for purchase at Tom and Cheri's, along with snacks and beverages. Restroom will be available there, too.

Save the Date! This set of Garden Walks includes the Yard of the Year from last season! We can hardly wait to see all the additions and new plants that each of these gardens will share! More details to follow!

We always enjoy sharing plants that can work well no matter which style you prefer. [Today](#) we are sharing Bradbury's Beebalm. This is one of the shorter beebalms and it sure is showy, not to mention it's bloom time is also appealing. It tends to bloom after many [Spring bloomers](#), but before summer bloomers. Enjoy learning all about this native that will be busy with bees, butterflies, and hummingbirds.

NEW ON THE BLOG: [Bradbury's Beebalm](#)



Click photo above for a complete guide from [GrowItBuildIt](#) to a plant we are absolutely loving in our first year trying it at *The Flower House!* Bradbury's Bee Balm!

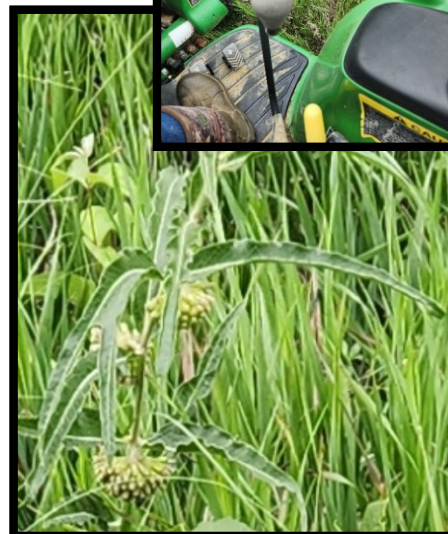
Laura shared her FIRST SEASON success with Blue Wood Aster! Can you believe it? First year they SLEEP, second year they CREEP, third year they LEAP! Apparently this little plant is an overachiever! Grow, Laura! ← Click photo for details!



Year 3 for this installation at 'The Wild Mess In Progress' we found a Spotted Joe Pye Plant we had totally forgotten about--it had disappeared for a couple of years! ← Click for plant details!

Always Look! You may THINK you are mowing only Invasive Brome Grass but...Suddenly a [Green Milkweed](#) might be looming above the grass!

Grow, Native Prairie Scarce Plant! Click→



MMS 8:32 PM

Not "sleeping", I have a baby blue wood aster!

Wishing you a week filled with "Gaining Ground"!"

