

Weekly Wild Wednesday

June 21st, 2023

What a Week of "Blooming Successes!"

Wooooooowwwww! What a week of color and inspiration! So many wild plants are in bloom and now we can see up close exactly WHY we need these Native plants to support life! Scurfpea is just stunning right now, this is one of the many prairie plants that we didn't appreciate until we took a photo and zoomed in! A Bug's Eye View of this plant really reveals its stunning beauty.

← Grow Scurfpea!

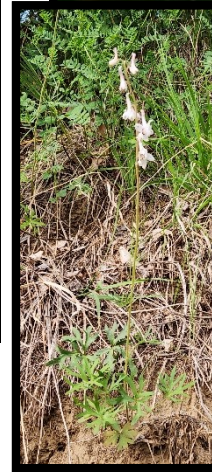


Above, we love this Larkspur that was found on Talbot Road!



Click any photos for links to more information!

Above Center, Salsify, in seed, is such a gorgeous look, and enormous! Thanks Laura, for asking about this seed head! And Dawn shared both photos of the Wild below, the Indigo she planted herself! Grow, Dawn!



Silver spotted skipper on false wild indigo



Painted turtle laying eggs



The Farmer's Market in Yankton was a HUGE success for our friend and fellow Native Plant Enthusiast Coral! The [Missouri Valley Master Gardeners](#) hosted a Native Plant Sales booth and it was BUSY! There was so much interest, and everyone was willing to get down and dirty to check out the many options with the Master Guidance of Coral and her crew! Grow Coral!!



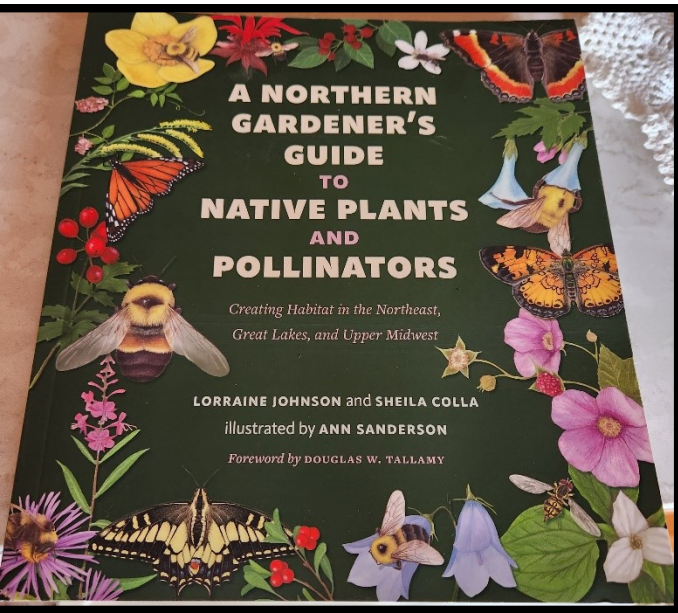
Exactly how did these plants grow? Lilly and Nelle check out Coral's huge success with Winter Sowing this year! Over 90% and still growing! Coral up-potted the tiny seedlings and THAT'S how it turns into a Native Plant Booth at the Farmer's Market!



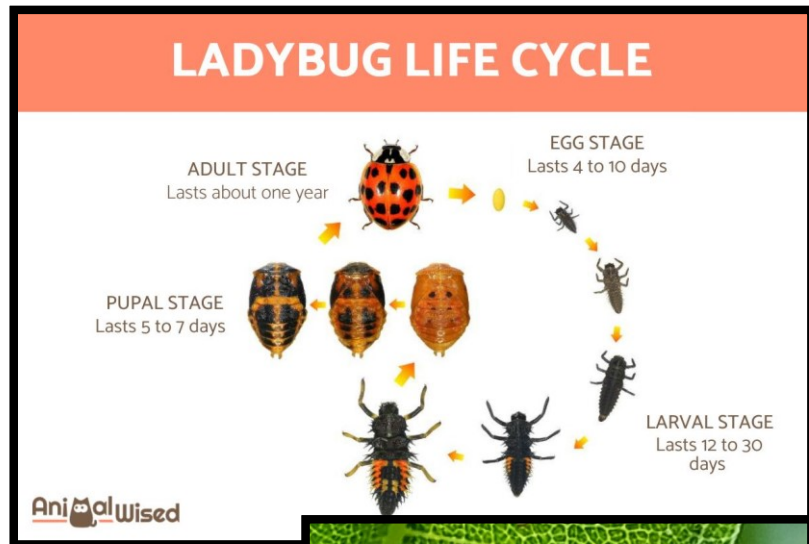
Coral invited us to her OWN gardens and we were SO impressed and excited by all the blooms and life she shared! Her thumb is FAR greener than OURS! Check out her Purple Poppy



Mallow next to ours at The Flower House! And she shared her GORGEOUS Monarch Butterfly-- In Progress! Woooooowww!!

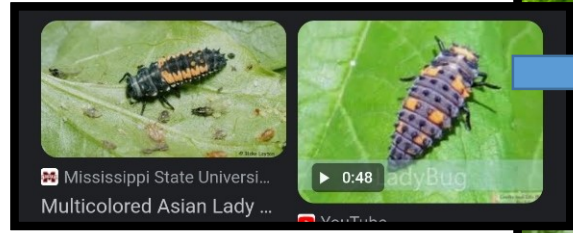


← Danielle shared her newest book-- and we went down a Rabbit Hole! What a wonderful book with SO MANY ideas, plant pairings, garden design ideas, and GORGEOUS illustrations!
 We ordered one for the Lending Library and it already has a Waiting List! Thanks, Danielle!



We found this insect on our Common Milkweed, and Dawn ID'd it as a Ladybug instar! That sent us on a search to see the difference between a true Native ladybug and an invasive look-alike. Ours is a Native Lady Beetle! Yippeeeee!!!
 Click chart for a detailed life of this helpful species!
 They munch on aphids! →

Below, Jefferson Beer Supply gave a shout out to Loess Hills Wild Ones! Thank you! And we LOVE the culture you are a part of, and your Little



43 likes
 jeffersonbeersupply ✓ Installed rain barrels for saving water
 ✓ Fortified our gardens beds with leftover brewing grains and whole cone hops
 ✓ Partnered with Scout Troop to recycle cans
 ✓ Build garden box out of old pallets and rerouted gutter drain to garden
 ✓ Planted two additional native species pollinator gardens with the help of Millborn Seeds and @clausen.

And the pollinator garden Loess Hills Wild Ones planted a while back is now in full bloom!

Little steps towards making the culture we want to be a part of.

Steps! Grow Jefferson Beer Supply!

Lilly, Dawn, Laura, and Danielle were an integral part of the success this weekend making Bird, Bee, Insect baths and Stepping Stones to help our gardens have life and show intentional Cues To Care in the Wilder spots! And some tamer areas too!



We can hardly wait to see how these turn out after a few weeks of slow drying!

Wishing you a week filled with "Blooming Successes!"



Wild Ones[®]

NATIVE PLANTS, NATURAL LANDSCAPES

LOESS HILLS

