

Weekly Wild Wednesday

December 1st, 2021

What A Week of "Weather Wonder!"



←Sara made this gorgeous centerpiece with the Native plants collected at the Seed Gathering! Wow!

This article is interesting, outdoor sowing but without the protective coverings of Winter Sowing. Have you tried this?

<https://wildseedproject.net/2016/11/ideal-time-for-sowing-native-seeds/>



What are we doing with our seeds? Several things! We are trying the Wild Seed Project's method, either setting up for January seeding, or starting a few pots of Fall Seeding whenever we have an awkward pause in our day— Click text above for the simple

version, or either photo for the detailed, complicated version! Or go to Joe Gardener for the podcast! What fun!

Below left, we marked some Goldenrod we wanted in a different spot and are trying

Nature Seeding. With this method, you "plant" the completely dry broken off plant seed head in the spot of your choice, and hope

Nature slowly, over Fall and Winter, seeds that spot at the right time for those seeds!

Shove those stems right into the spot of your choice! → Citizen Science Test at the Wild Mess In Progress!



Best Way to Start and Grow Native See

The joe gardener Show - Organic Gardening - Vegetable Gardening - Expert Garden Advice





Where are we planning to place all those seedlings? Well.. first we are going to see what Native Species return on their own after clearing the Invasive Honeysuckle! (see last week's Wild for details on this) and then we will map out the sun this Summer and put our various seedlings where they 'should' like

their new homes! For example, the American Bittersweet on the previous page might like to climb one of the dying pine trees! Some ←Before and After photos. →

We did treat the Canbium Edges with herbicide very carefully...ONLY In an area we did not see any orchids last Spring. → We don't like using chemicals but in this case...Carefully...

We found it so funny that one of the chainsaws is named "Wild Thing", NOT by US! Haaaaaaa!

No Natives were harmed in the making of this Wild...However...the Honeysuckle isn't commenting...HA!



If you do not have Honeysuckle on your property, come help a neighbor or public area remove theirs!

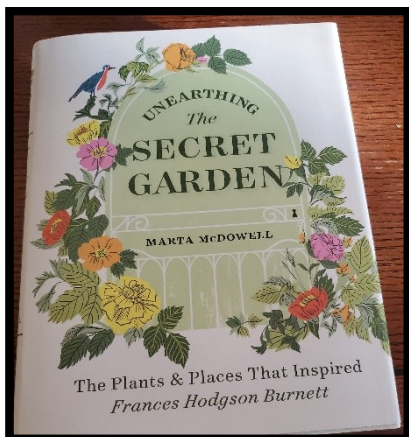


Wild Ones Nursery & Seed Supply

Recommend native plant nurseries and seed suppliers for listing on the Wild Ones website.

Finding native plants can one of the biggest challenges to natural landscaping. To enable members and the public to find native plants, Wild Ones lists native plant nurseries and seed suppliers on our website. If you have a favorite native plant nursery or seed vendor, please submit your recommendation by completing this [online form](#).

Submissions will be reviewed by Wild Ones members and staff to ensure alignment with Wild Ones mission. You can view the list on Wild Ones [website](#).



Here are a couple of National Wild Ones links!

←One is for submitting your areas Native Plant Resources! [We would love to add these to our Resources Page on our website as well, so please let us know any of YOUR resources not already listed on this page!](#)

Also, here are some National Wild Ones

upcoming webinars! → Save the dates! Some of these have not been able to be recorded, so make sure to join LIVE just in case!

←The Lending Library got this book, *Unearthing the Secret Garden*! Since the secret garden was one of our FAVORITE Childhood books, we cannot wait to see what this author has to divulge! It is checked out—By US!

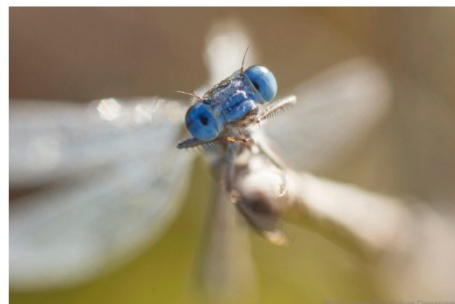
←Dianne submitted this podcast several weeks ago, and we finally had room to include it! Thanks, Dianne!

We loved planning for new areas while reading this article! So interesting! →

Episode 53: Moely Prairie - In Their Own Words

Play • 48 min

Moely Prairie is the largest remnant of the 14,000-acre Sauk Prairie in Sauk County, Wisconsin. Because it has never been plowed, the prairie is home to a rich array of native prairie plants and animals. Permanently protected through a perpetual conservation easement by owner Barbara Moely in 2015, the prairie is managed and cared for by The Prairie Enthusiasts Empire-Sauk Chapter. In this episode of Nature Revisited, we learn- through the words of the aforementioned- of Moely Prairie's history, its ecological treasures, the challenges of its upkeep, and what lays in store for the future.



Nikon 105mm macro lens. ISO 640, f/10, 1/320 sec.

Male damselflies try to entice females to mate by performing courtship rituals that usually involve him hovering in front of her and trying to show off his best physical traits (sound familiar?). If the damselflies do mate, they use what's often called a 'wheel' position, in which the male attaches the tip of his abdomen right behind the head of the female with special appendages. The female, in turn, brings the tip of her abdomen up to a spot just behind the male's thorax where he previously deposited a packet of sperm. If disturbed while mating, they can fly off while maintaining that same joined position, which – again – seems pretty impressive. After mating, the male often stays connected to the female while she lays eggs. That helps him ensure that no other males fertilize her eggs.

Register for 'Native Plants, Phytoremediation & Green Infrastructure' Webinar

Wild Ones Presents 'Native Plants, Phytoremediation & Green Infrastructure: How Native Plants Can Be Used to Improve Environmental Quality' with Eric Fuseller

Register now for this FREE informative webinar on Thursday, December 9th at 6 p.m. CT.

Discover how native plants and phytoremediation can be used to improve soil, air and water quality by removing or transforming common environmental contaminants found in urban, suburban and rural settings. Learn how to pay attention to surrounding land uses and activities to know how to select species for your next native plant project that will benefit the environment beyond providing habitat for pollinators and wildlife.

This webinar will be recorded and available to the public on the Wild Ones [YouTube channel](#) shortly after the event.

Speaker [Eric Fuseller](#) is an Environmental Scientist based in Arkansas, founder of the Wild Ones Ozark Chapter and serves as a Wild Ones National Board Member.

Register Now!



Save the Date!

Wild Ones Presents 'America's Public Gardens: A Resource for Native Plants' with Matthew Ross

SAVE THE DATE [Thursday, January 13th, 2022, 6:00 p.m. CT](#); registration opens soon.

Take a journey to several of the nation's public gardens. From gardens that grow exclusively native plants to others that have worked them into their diverse collections, get an in-depth look into how public gardens can help inform and influence your design and maintenance practices.

Speaker [Matthew Ross](#) is a Wild Ones National Board Member and Director of Continuing Education at Longwood Gardens.





Sustainability for All.

News • Treehugger Voices

My Top Tips for a Wildlife-Friendly Garden

Create a welcoming, biodiverse garden that benefits all animals that inhabit it.

By [Elizabeth Waddington](#)
Updated September 17, 2021
 Fact checked by [Haley Mast](#)



← And Chris Helzer is trying to teach us the difference between Dragonflies and Damselflies!

Wishing you a week filled with "Weather Wonder!"



Map underwritten by plantinseeds.org