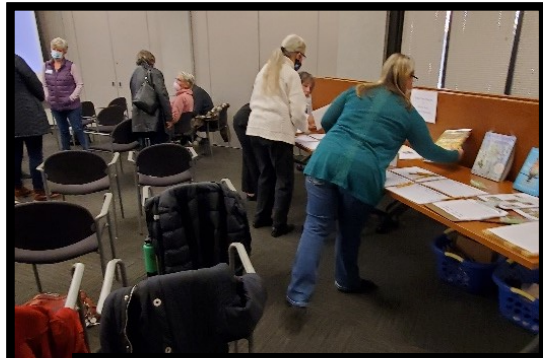


Weekly Wild Wednesday

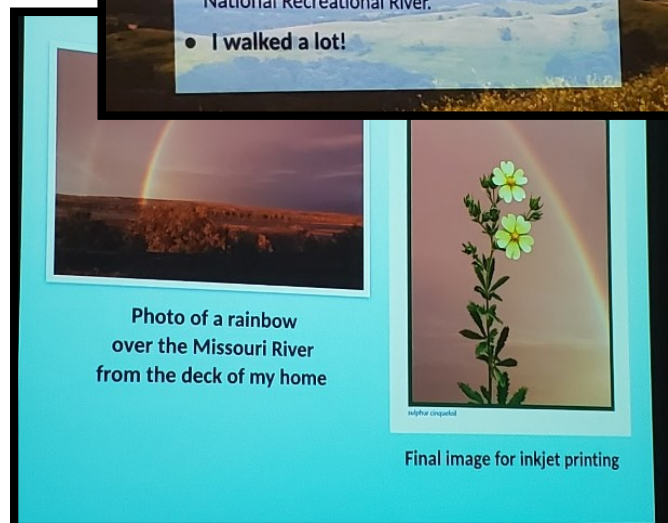
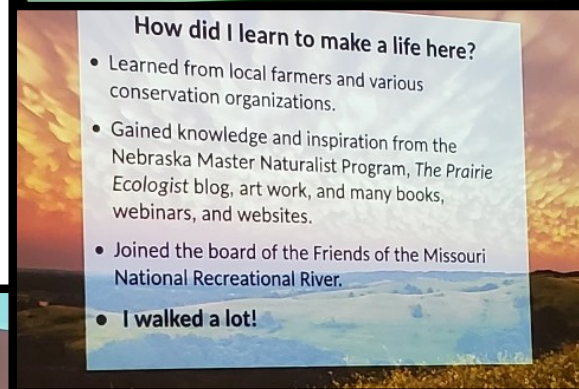
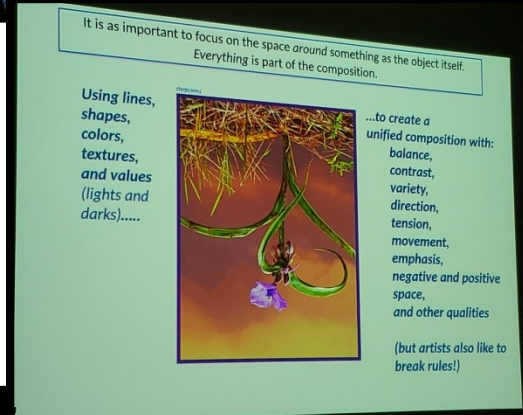
November 17th, 2021

What A Week of "Artistic Appreciation!"



Pat James! Wow, do we wish she were OUR next door neighbor! She drove 2 ½ hours to present a **FABULOUS** program for Loess Hills Wild Ones! And YES, this > flower is upside down **ON PURPOSE**, giving a new perspective while creating these artistic masterpieces! Pat cares for her own 600 acres of riverside paradise, and we can hardly wait to visit! Click for links!

←We looked at a few of our activities during the last year on a collage board that was anything but **ART**— But a **LOT** of fun!! We shared Seeds, Stories, and **SMILES!**





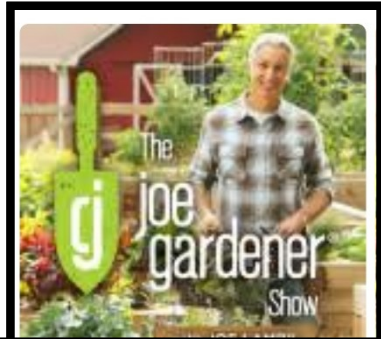
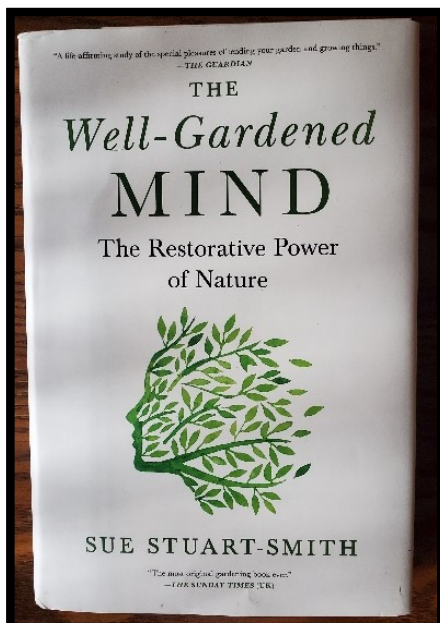
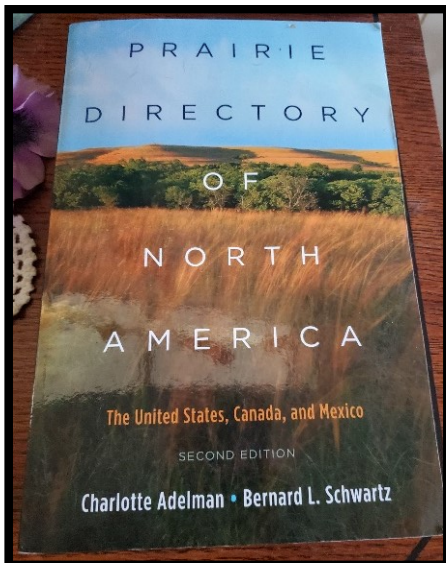
←We had a bit of a turn in our weather which gave us a new appreciation for blogs, podcasts, videos, and all things indoors! So we went down a few Rabbit Holes...

If you listen to nothing else this year Podcast wise, DO listed to this two part series on the Brooklyn Bridge Park! It is absolutely worth the time. It made us think a LOT about all things Nature-- and sharing Nature in EVERY POSSIBLE space. We learned some things we can try in our Own spaces, like Stem Art Sculptures for bees! →

We received TWO new books for the Lending Library!

One is actual locations of real prairies you can visit!

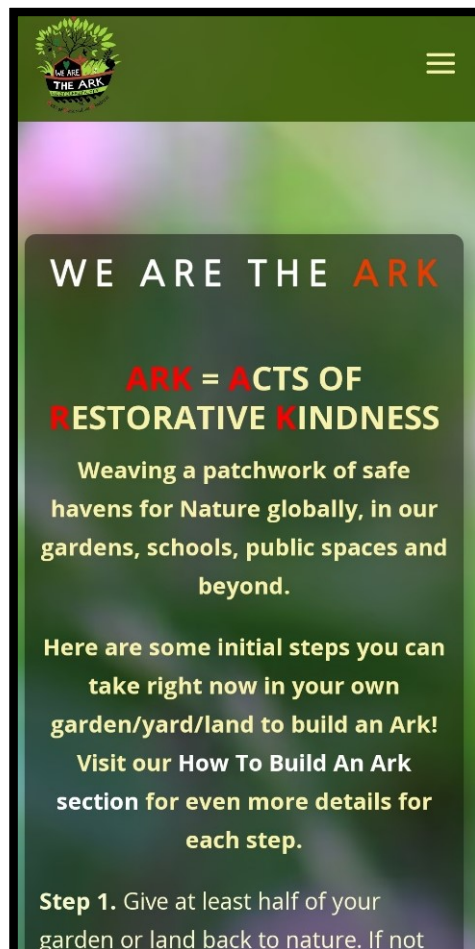
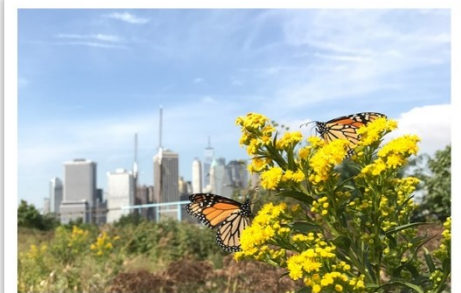
The second is about the Restorative Power of Nature! We can hardly wait to read these on the next snowy days!



232-Ecological Horticulture at Brooklyn Bridge Park, With Rebecca McMackin, Part I

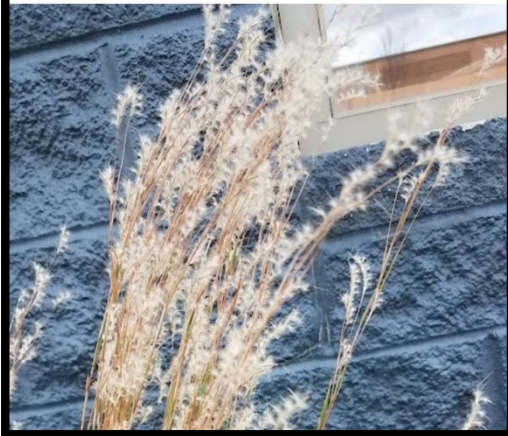
233-Ecological Horticulture at Brooklyn Bridge Park, with Rebecca McMackin, Part II

NOVEMBER 4, 2021 | CARE, PODCAST



←Acts of Restorative Kindness, wow! We found this awesome web site with really practical advice in a step by step format! We love finding likeminded organizations that help us all find our own personal approach to our own unique situations!

Native Plant: Little bluestem named 2022 Perennial Plant of the Year

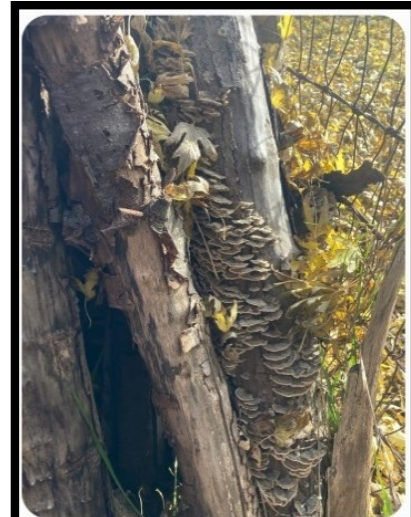


←Little Bluestem was named the Perennial Plant of the Year! Yippee!!!!!!!!!! Grow Little Bluestem!!!!



←Our baby Bur Oak which we nicknamed Dougous tallamus has lost its own leaves going into Fall! Find what you Need, Little Tree! Safe Wintering!

Linda went on a Yard Tour and found this! Wow!! Does anyone know details of this super gorgeous-?fungus? →



MMS

Look what else I found in my back yard!!

Amazing what we see when we look!!

Leave the Leaves!



As our native gardens go dormant and leaves fall, resist the urge to "tidy up." Standing dead stems and beds or blankets of leaves in your garden provide important fall and winter habitat for overwintering insects, amphibians, reptiles, and other animals. Fruits and seeds from standing native vegetation are important food sources for birds through the winter.

To help your neighbors understand the importance of "leaving the leaves" in garden beds, you may wish to display the sign at left.

←Don't forget to find a home other than the landfill for your Fall leaves! What are your solutions to keeping the overwintering critters safe in your space? Let us know!



←Dawn identified this Wahoo and when we looked it up it said "Hearts Bursting With Love!" Awww... Dawn said she had not seen this in Stone State Park before this sighting! It is also the recommended excellent Nature alternative to the invasive burning bush. We want some in our personal spaces!

Euonymus atropurpurea→

Wishing you a week filled with "The Art In Nature"



Map underwritten by plantinseeds.org