

# Weekly Wild Wednesday

May 5<sup>th</sup>, 2021


## What a 'Scent'-uous Week!



Flowers are blooming everywhere! Mercedes did an indoor Scent Cloud installation at the Sioux City Art Center (*Open today only--from 10-2*) that made us think about our "Outdoor Scent Clouds." The plums from last week are still scented, the Chokecherry are a bouquet in themselves, and so many of our Spring flowers send out beauty for the eye and the "Perfume of Spring!"

Dr. Paul Weber Details

Hi Ruth,  
I thought of you while taking my excursion through Sertoma Park and came upon this little beauty - the hoary puccoon. One of the first wildflowers to bloom in spring, the name comes from the "hairy" (hoary) leaves and stems, while "puccoon" comes from a Native American term for the root which can be used to make a red dye.



← Here is one beauty for the eye that Paul shared! Wow!

And Jeanne's Redbud! →

We learned Redbud are edible, but...caveat...we are NOT experts in edible Wild!



Mercedes gifted this cool sticker below!



← MMM...Chokecherry...the scent is absolute aromatherapy!



### Redbud Tree Ornamental Value

The small rounded canopy shape of redbud trees make them ideal for planting in any type of landscape design. They are planted as specimens in the landscape or as shade trees. Planting them in a row gives a spectacular view during the flowering season. Besides ornamental value, the flowers of redbud trees are fragrant and edible. They are eaten raw in salads or prepared by boiling and frying. Young redbud fruits and seeds are a favorite food for birds, deer, and cardinals.





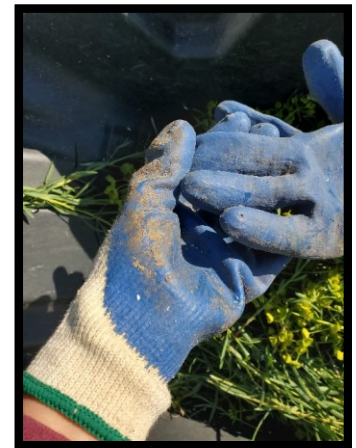
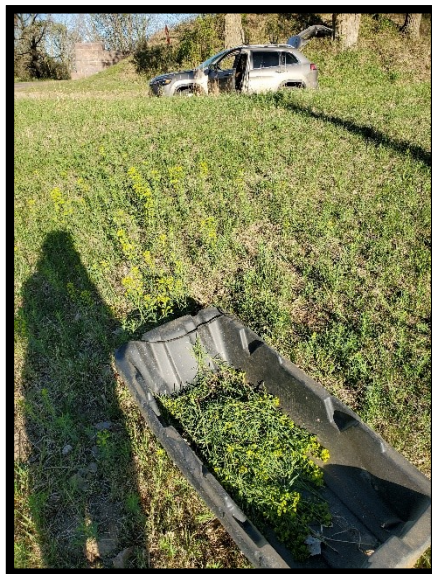
Friends of Stone Park did a major clean-up of Hwy 12, Thank You! The Wildlife thanks you, too! →

Speaking of clean-up—On

The “Friends Pocket Prairie,” we are trying a new Citizen Science method on the Highly Invasive Noxious Weed Leafy Spurge which emerged! Because the pocket prairie is so small, centrally located, and easily managed, many of the volunteers pass this site on a daily basis. If we pull these in full bloom and put them in the trash (NOT in compost or left to decompose like other weeds), it is theorized that it eliminates masses of seeds and stresses the plant when all its energy is in the bloom. This has been tried for 2 years now in a nearby prairie, also very small and visited daily during the bloom season, with good results. The FIRST year, there were even MORE blooms and intensified response from the Spurge, now year 2 there are very few coming up!

We will keep you posted on the outcome.

Some people are sensitive to the milky sticky mess inside these weeds, so wear protective gloves that you can wash later!



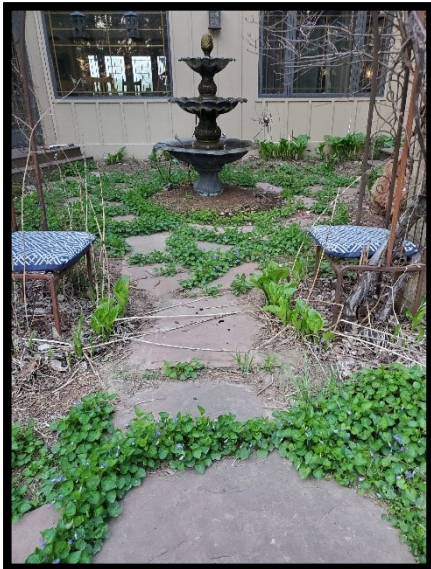
**AARGH! BAD Plant!!!**  
Leafy Spurge in Full Bloom→

←The nice thing about pulling Evil Invaders is you get up close and personal and see all the other WONDERFUL Prairie blooms emerging!

←Yaaaaayyy! GOOD!!!!







With their heart shaped leaves and cheery blue flowers, **violets** aren't really bad guys in fact they are the **host** plant for a wide range of **butterflies** known as fritillaries.  
Apr 7, 2017

[https://xerces.org > blog > plants-for...](https://xerces.org/blog/plants-for...)  
**Plants for Pollinators: Violets | Xerces Society**

**Iowa's Wild Places : An Exploration with Carl Kurtz**  
**A Practical Guide To Prairie Reconstruction by Carl Kurtz**  
[A Year of Iowa Nature: Discovering Where We Live \(Bur Oak Book\) by Carl Kurtz](#)

**From:** Carl Kurtz <[carlpaulkurtz@gmail.com](mailto:carlpaulkurtz@gmail.com)>  
**Sent:** Sunday, May 2, 2021 8:18 PM  
**Subject:** Lawns-Just Grass?

Dandelions and violets serve as food hosts for early spring insects and over-wintering butterflies. The leaves, flowers and stems of dandelions are also excellent food sources for many mammals. If we insist our lawns be nothing but green grass they become sterile environments controlled by pesticides and fertilizers and sources of water pollution. And mammals will focus on plants with more nutrients, our flowers and shrubs.



**Dianne shared this note from Carl, and it sparked a thought train.**

**In just 2 years, my personal view on the Common Violet has changed drastically. This area at "The Wild Mess in Progress" used to be one I considered infested with weeds! The violets, while cute, took over and I felt like they needed to be removed. Now I see them as a wonderful Host Plant and habitat for Fritillary Butterflies and welcome them, carefully transplanting them to other locations for a natural, beautiful, AND BENEFICIAL Ground Cover! What a difference it makes to view these spaces towards Nature Gardening! Click Xerces for full article, and Carl's note for his website!**

**ASK Doug Tallamy**

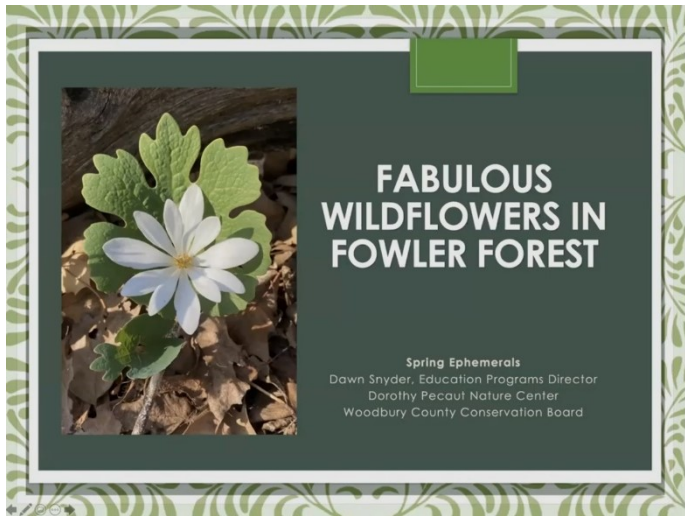
**#5** When converting to natives, should I just stop mowing?

**Homegrown National Park has launched a new Video Series called Ask Doug Tallamy! Could not link, but It is posted on Instagram, join their Feed!**

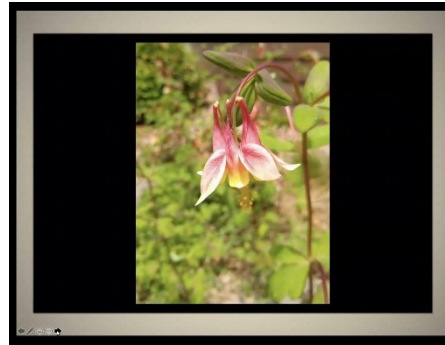
**Doug also did an excellent podcast on the [Joe Gardener Show!](#) ←Click for link!**

**He mentioned writing a book on Q&A, because he gets so many questions, which sparked this [POEM!](#) ←Click for link! Oh what a Surprise! HAHA!**





Dawn gave this excellent presentation and we loved our virtual walk through Fowler Forest.  
 ←Click photo for link!



Now it's time to go visit in person!



Oh-Last week we mentioned signage and stepping stones at the Dorothy Pecaut Nature Center and then did not have room for photos! Here they are!



Wednesday when we planted hazelnut, and choke cherry shrubs along the back fence at Agape.

PS: the native plum shrubs scented the air to our delight, and to the obvious delight of the various bees species and other flying insects. All this action drew at least one small spider. 🕸️

And Jeanne had this update from the Agape Community Garden!



Wishing You a Wonderful Week of SCENTED Wildflowers!



NATIVE PLANTS, NATURAL LANDSCAPES

LOESS HILLS



Map underwritten by [plantinseeds.org](http://plantinseeds.org)