

Quilt Interseeding -Pocket Prairie



This Laugh & Learn project with Friends of Stone Park was to place locally sourced prairie seeds (sourced from an expert) in a stressed site with many existing native prairie plants in a fun, family friendly way!

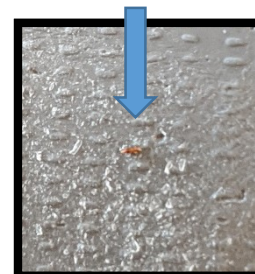
First we raked the snow away, and placed two kinds of seeds in those squares.

Then we raked the NEW squares, covering the SEEDED squares with that snow.

Then seeded the newly exposed soil squares, and raked snow over the entire space.



Some of our seeds were *Pale Purple Coneflower* heads, and we used thick gloves and a rubber mallet to smash and spread these. However, a good tip provided by Nancy was to use some Duct Tape to remove a barb from your finger!



We will keep you posted over the next few years to see if these slow growing seeds germinate and produce Prairie!

You can name your Quilt Patch if you would like! These seeds will not stay in this shape--and we don't want them to—but it is a super fun way to get those seeds out onto your Pocket Prairie Patch!

Let us know your ideas or experiences, and you are invited to Grow Wild With Us! In YOUR style! We cannot wait to see what we all grow—Together!

