

# Weekly Wild Wednesday

For December 23rd 2020

It has been a week full of fond memories of past years –And current fun activities!



The highlight of the week was receiving the GORGEOUS Holiday card that Dianne spearheaded and sent to many of us!

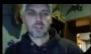
Thank you, Dianne!



Our Plant Selection Team of Carrie, Elisa, and Dotty did a detailed review of Native Plants, and exciting choices for the upcoming plant sale list will be available soon!

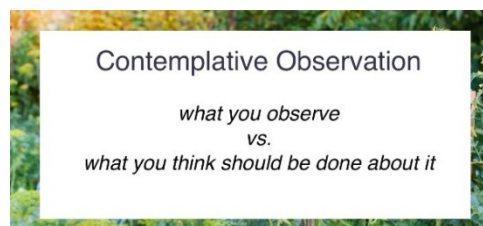
Additional considerations

- Least amount of chemical to do the job
- Proper chemical for a given site – riparian areas/steep slopes/shallow soils
- Surrounding native vegetation
- Chemical/soil persistence
- Weather
- Time of year
- Goals – what are they, incremental, include surrounding properties



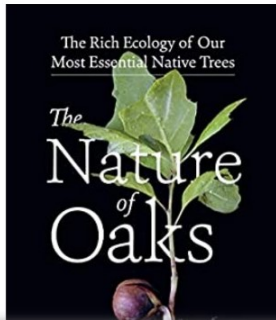
Jerod Huebner Zoom presented some choices for Invasive Plant Management Master Class, through Missouri Prairie Foundation. By request, I have a detailed list of the least aggressive chemical mixes per situation also included in this educational webinar.

Regenerative Landscapes also had a Zoom, and this slide was so interesting! Makes one think!

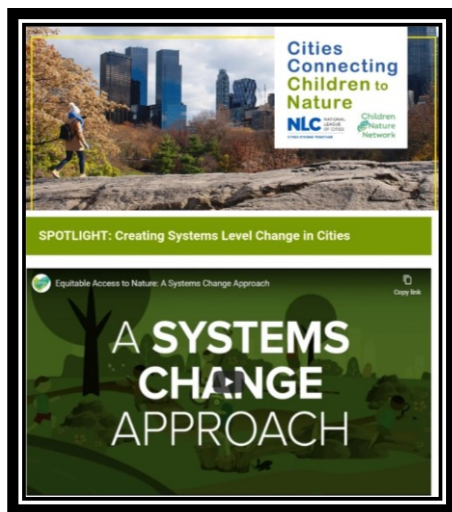


Douglas W. Tallamy

The Nature of Oaks: The Rich Ecology of Our Most Essential Native Trees



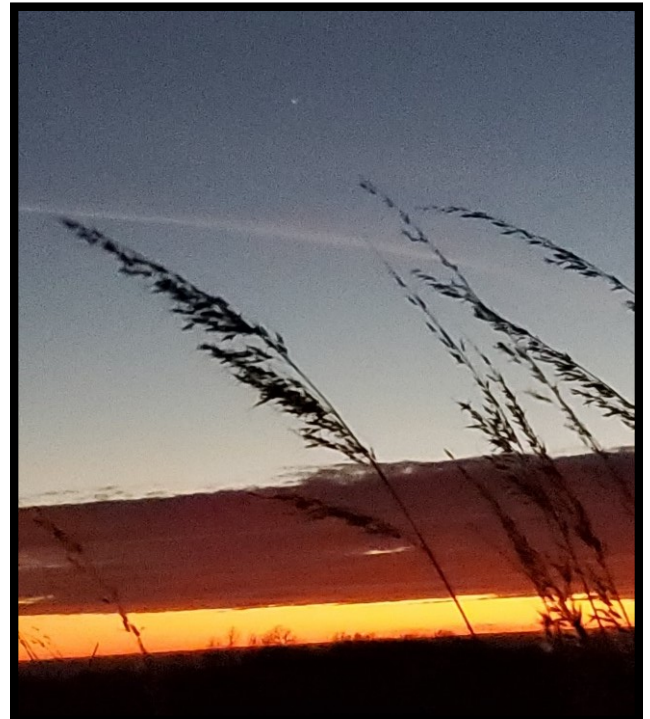
Pre-order is available for the Douglas Tallamy book ***“The Nature of Oaks”***. This book has been requested through the Library downtown Sioux City. Contact your local library to request this (or any) book on your Wish List!



Dianne also sent this link to [www.childrenandnature.org](http://www.childrenandnature.org)

This site is worth a visit!

Some of us were lucky enough to view the alignment of Jupiter and Saturn on the Winter Solstice, right after sunset, before it clouded over. Wow! For 40 minutes, we were mesmerized. The sunset—and star--were stunning amongst the Native grasses. If you look closely, you can see the Planet alignment just left of Center above the grasses. It clouded over soon after this photo was taken.





Jeanne and I had such fun building the Birdie B&B at Agape Community Garden. We had a question for all of you--Should the Agape B&B have either more greenery and sticks behind it-- or less density to support bird sheltering? Thoughts? The Flower House B&B has the Shelter belt behind it for this purpose.



Sara made a stunning sign to complete the project!





Speaking of The Flower House, Steve completed and installed the trellis! It is just stunning. It is hinged for easy clean up and maintenance. Just in time, as we have a Blizzard currently in our midst!

Stay Safe, Healthy, and WARM!



Wishing you the Happiest of Extraordinary Holiday Seasons!

